



UC San Diego

ALERTCalifornia Camera User Guide | JAN 2024

## ALERTCalifornia Camera User Guide

🌐 [cameras.alertcalifornia.org](https://cameras.alertcalifornia.org)

ALERTCalifornia is a UC San Diego public safety program that provides state-of-the-art sensor technology to prepare for, respond to, and recover from wildfires and other natural hazards.

Live feeds are available 24 hours a day 365 days a year. The site is optimized for both desktop and mobile viewing. All of our data and imagery are open source with credit given to ALERTCalifornia. [Crediting guidelines are available here.](#)

There are **three ways to navigate to specific cameras**: select a camera from the map, select a camera from the grid camera quilt display, or type in a camera name in the search bar on the top of the page.

Please visit the [ALERTCalifornia FAQ page](#) on our website to learn more about what to do if you see smoke, why more cameras may be offline during the winter, and more.

## Index

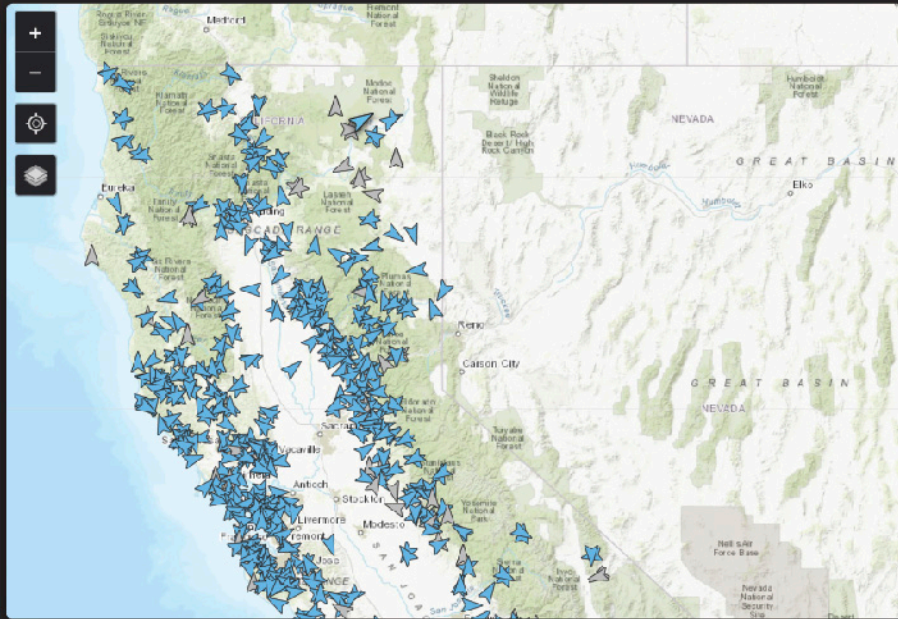
Using the Map	2
Camera Quilt	3
Interacting with Cameras	4
360° View	5
Single View	6
Timelapse	6



**ALERT**California

ALWAYS LIVE AT [ALERTCALIFORNIA.ORG](https://ALERTCALIFORNIA.ORG)

# Using the Map

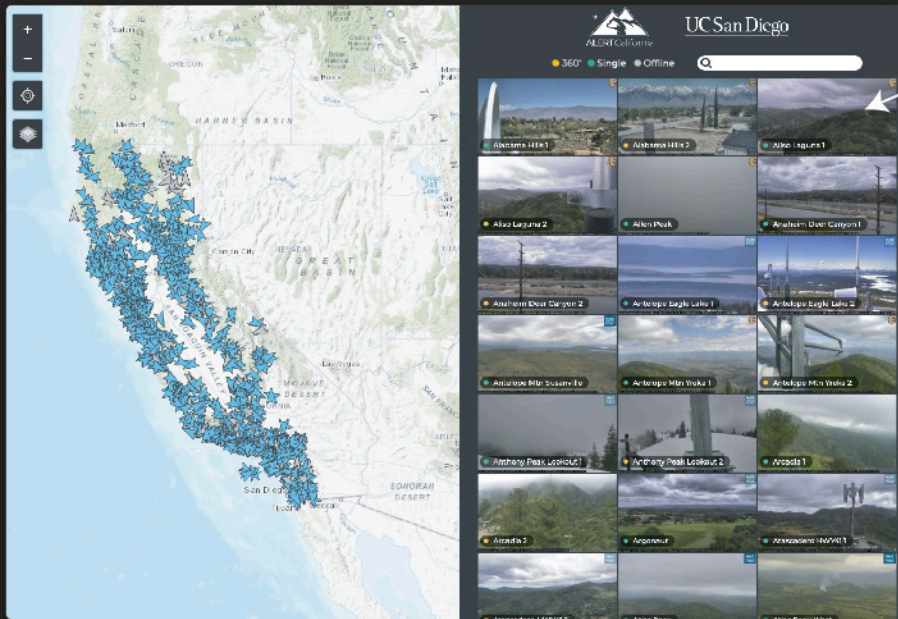


The map of California features light blue arrow shaped markers that represent each ALERTCalifornia camera and indicate the direction the camera is facing. To jump directly to the cameras closest to your current location, click the target shaped location button.



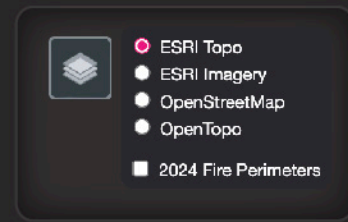
To zoom in on the map use the plus and the minus buttons located on the upper left, or pinch to zoom using your fingers on a phone or tablet.

To move the map, click, hold, and drag.



**QUILT**

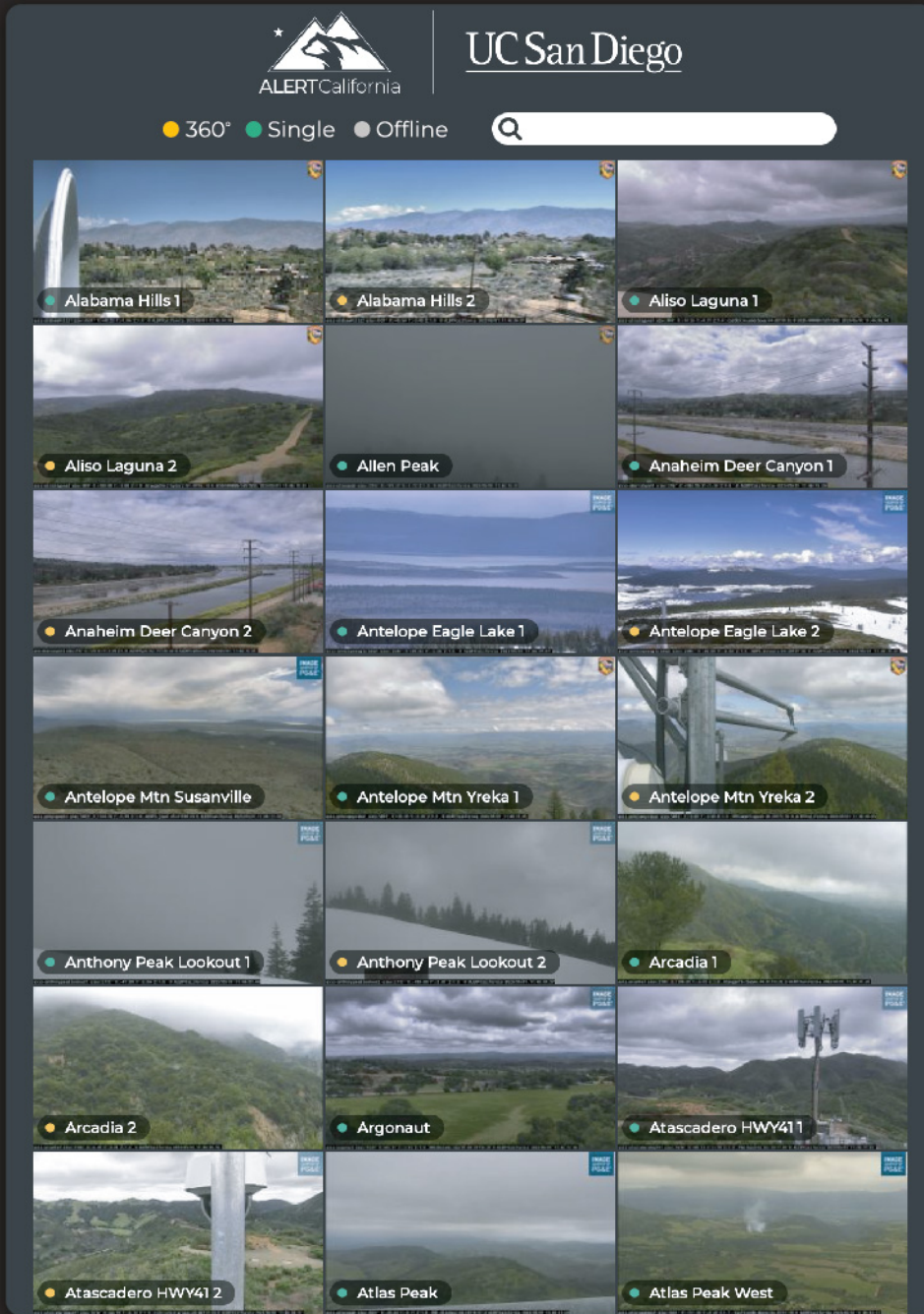
As you zoom, the cameras in the map view are displayed in the camera quilt. Sometimes more than one camera is available at a location. Click on the light blue arrow to display the camera options at that location. You can also view the cameras by clicking their image in the camera quilt display.



The final button on the left is a stack of squares, this is the map layer display button. Click to see different map layers such as topography or the street maps.







## Camera Quilt

The camera quilt displays the cameras that are within the map view. As you zoom in or out on the map, the number of cameras displaying the camera quilt will change.

Each camera is labeled with a colored dot: yellow dots are cameras with a 360° view, green for a standard single direction camera view, and cameras with a gray dot are offline.



You can also use the search bar to find specific cameras by name.

Cameras are managed, monitored, and moved by trained professionals. The public is not able to move the cameras to a different view.

## Interacting with Cameras

Cameras may display a single view or they can showcase a 360 degree panoramic view as indicated by their colored dot in the quilt display.

● 360° ● Single ● Offline

When you select a camera from the quilt display, a new window appears with the camera view and corresponding tools. The single view and panorama view windows are very similar and many of the buttons are available on both displays.



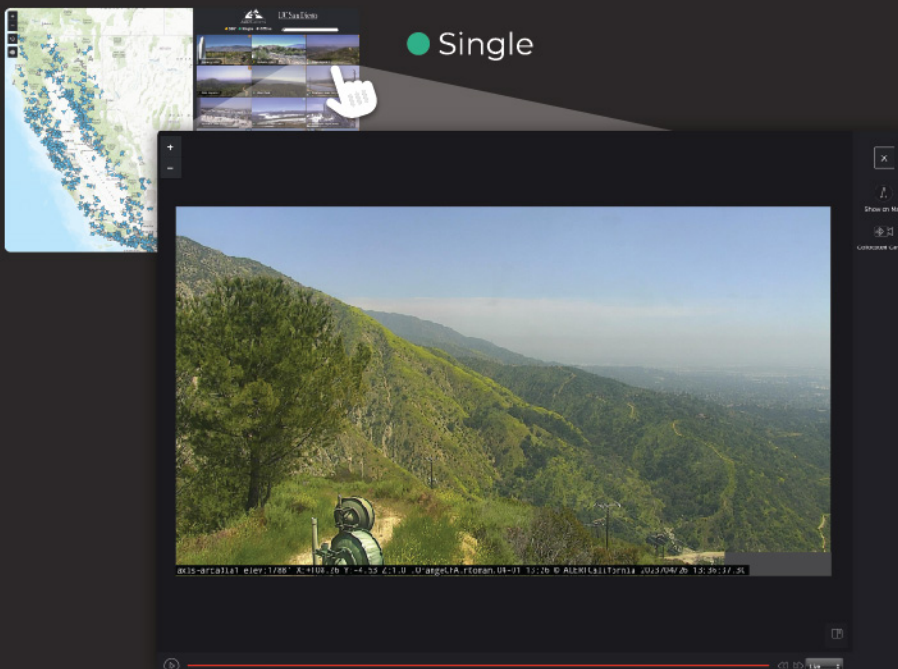
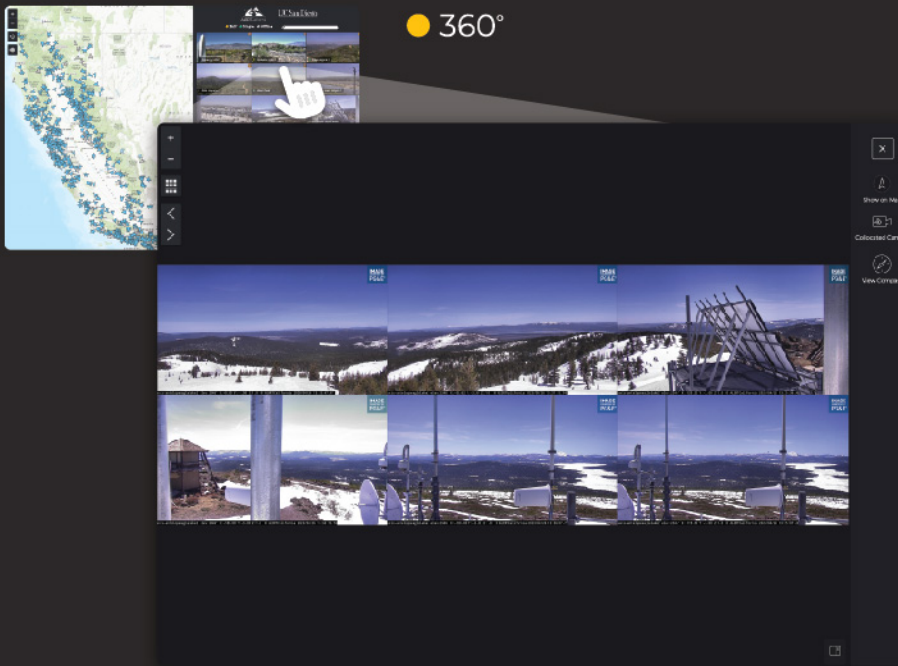
In a 360° display the plus and minus buttons in the upper left allow you to zoom in or out on the camera display.



The button with multiple squares is a tool to toggle between a 360° quilt view of six stacked images and one continuous panorama.



The left and right arrow buttons shift the images left or right, changing where your 360° display starts and stops. This works well when you zoom in on one 360° frame and then click to the left or right. It mimics turning your head and looking to the side.







## 360° View

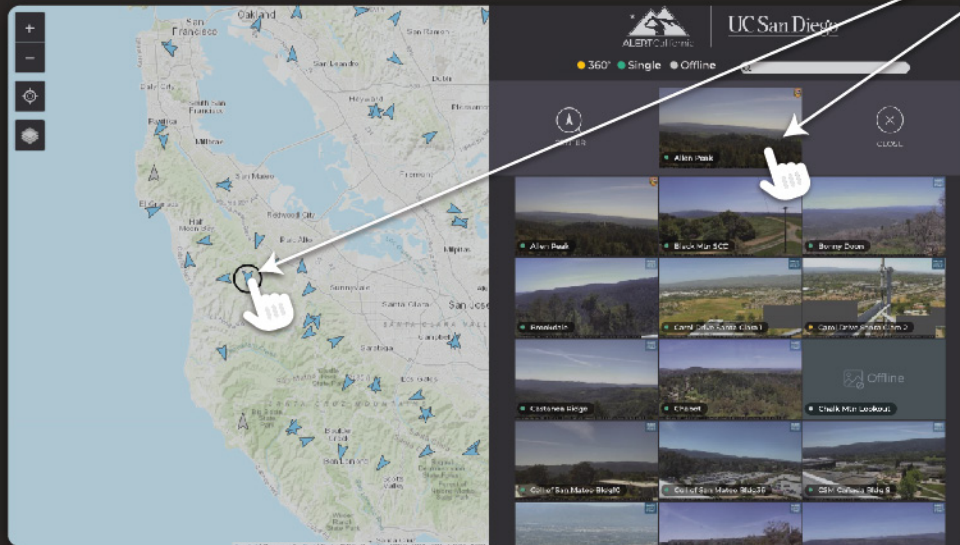
The controls on the right sidebar can be toggled on and off by clicking the sidebar button at the bottom right of the viewer window. This allows for a larger image viewing window if desired.



The “show on map” button closes the camera viewer window and shows the camera on the main map view. This camera is now circled on the map and featured on the top of the camera quilt display.



Click on the light blue camera arrow or the camera on the quilt again to go back to the camera view window. Click close to deselect the camera.

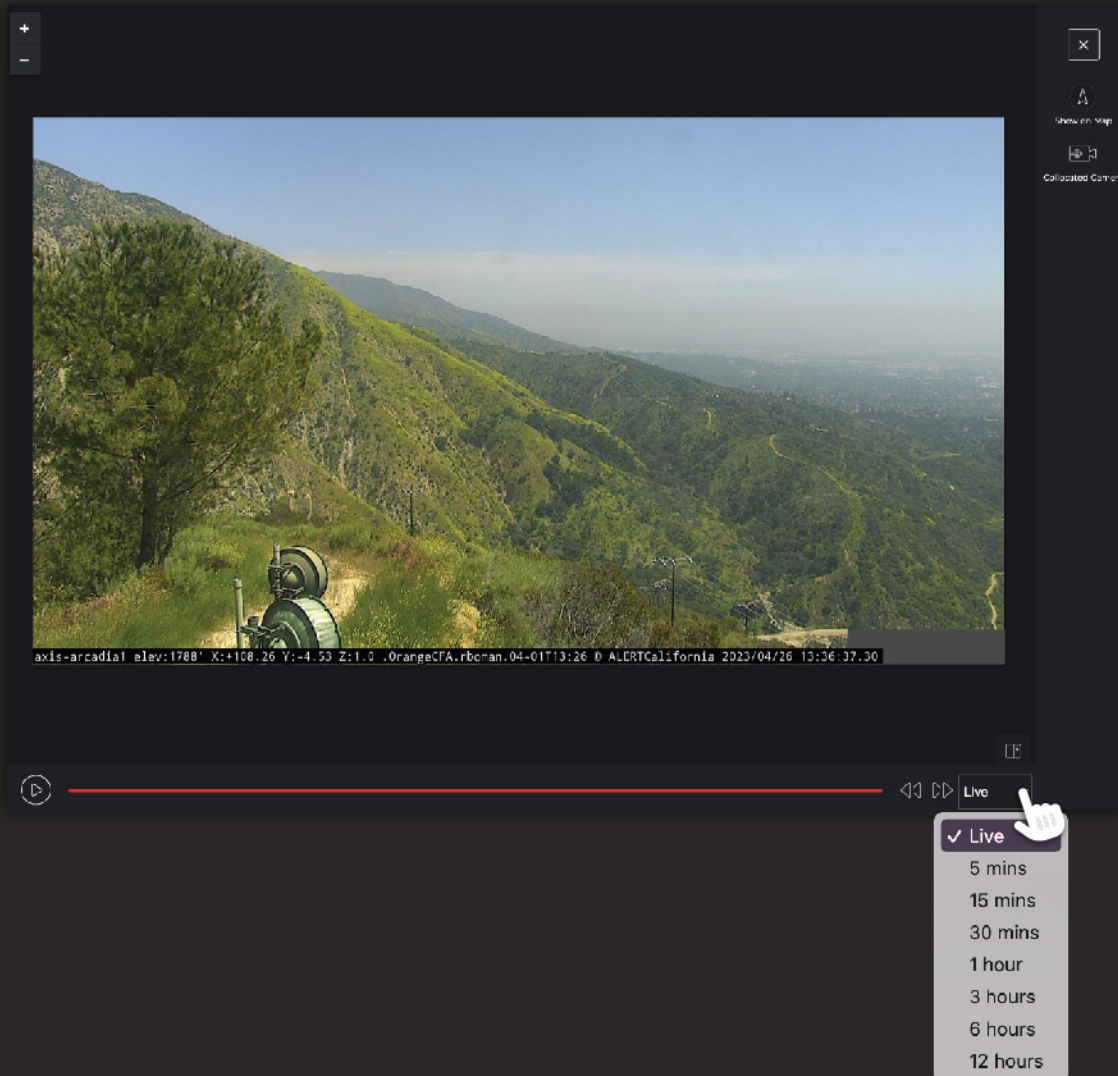


The “collocated camera” button toggles between cameras at the same location. This often switches between a 360° camera view and a single camera view.



Click “view compass” to display directional compass degree markers on the 360° views. The compass is not available on single view cameras.





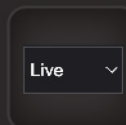
## Single View Camera

The single camera view window is nearly identical to the 360° view.

## Timelapse

The timelapse function is **only available in the single camera display**.

Click “Live” at the bottom right to open the dropdown menu with time lapse options. Click how far back in time you would like to view and the timelapse video will automatically play.



Use the play and pause button on the bottom left to control your video. You can also click, hold, and drag backwards or forwards on the red player bar to rewind or fast forward the timelapse video.



Click the X in the upper right to close out of the video player window.



**Questions?** Contact us or learn more at [ALERTCalifornia.org](https://ALERTCalifornia.org)



**UC San Diego**